

Patch by DMX



Effenaar Grote Zaal / Main Hall

16-02-'24

DMX		FIXTURE		OPTICS				
adres	channel	fixture	manufacturer	type	LENS	angle footprint		
1 .		1	1	generic	par64	NSP	22 x 20 °	1
1 .		2	2	generic	par64	NSP	22 x 20 °	1
1 .		3	3	generic	par64	NSP	22 x 20 °	1
1 .		4	4	generic	par64	NSP	22 x 20 °	1
1 .		5	5	generic	par64	NSP	22 x 20 °	1
1 .		6	6	generic	par64	NSP	22 x 20 °	1
1 .		7	7	generic	par64	NSP	22 x 20 °	1
1 .		8	8	generic	par64	NSP	22 x 20 °	1
1 .		9	9	generic	par64	NSP	22 x 20 °	1
1 .		10	10	generic	par64	NSP	22 x 20 °	1
1 .		11	11	generic	par64	NSP	22 x 20 °	1
1 .		12	12	generic	par64	NSP	22 x 20 °	1
1 .		13	13	generic	par64	NSP	22 x 20 °	1
1 .		14	14	generic	par64	NSP	22 x 20 °	1
1 .		15	15	generic	par64	NSP	22 x 20 °	1
1 .		16	16	generic	par64	NSP	22 x 20 °	1
1 .		17	17	generic	par64	NSP	22 x 20 °	1
1 .		18	18	generic	par64	NSP	22 x 20 °	1
1 .		19	19	generic	par64	NSP	22 x 20 °	1
1 .		20	20	generic	par64	NSP	22 x 20 °	1
1 .		21	21	generic	par64	NSP	22 x 20 °	1
1 .		22	22	generic	par64	NSP	22 x 20 °	1
1 .		23	23	generic	ACL	clear	7 °	1
1 .		24	24	generic	ACL	clear	7 °	1
1 .		25	25	generic	ACL	clear	7 °	1
1 .		26	26	generic	ACL	clear	7 °	1
1 .		27	27	ShowTec	four-light Blinder	MFL	35 °	1
1 .		28	28	ShowTec	four-light Blinder	MFL	35 °	1
1 .		29	29	ShowTec	four-light Blinder	MFL	35 °	1
1 .		30	30	ShowTec	four-light Blinder	MFL	35 °	1
1 .		31	31	ShowTec	four-light Blinder	MFL	35 °	1
1 .		32	32	ShowTec	four-light Blinder	MFL	35 °	1
1 .		33	33	ShowTec	four-light Blinder	MFL	35 °	1
1 .		34	34	ShowTec	four-light Blinder	MFL	35 °	1
1 .		35	35	generic	floodlight	clear	120 °	1
1 .		36	36	generic	floodlight	clear	120 °	1

DMX ID		FIXTURE		OPTICS				
adres	Channel	Fixture	manufacturer	type	Lens	Angle	footprint	
1 .		37	37	generic	Par64 Zij Rechts	MFL	38 x 20 °	1
1 .		38	38	generic	Par64 Zij Rechts	MFL	38 x 20 °	1
1 .		39	39	generic	Par64 Zij Rechts	MFL	38 x 20 °	1
1 .		40	40	generic	Par64 Zij Rechts	MFL	38 x 20 °	1
1 .		41	41	generic	Par64 Zij Rechts	MFL	38 x 20 °	1
1 .		42	42	generic	Par64 Zij Rechts	MFL	38 x 20 °	1
1 .		43	43	generic	par64 shortnose	MFL	38 x 20 °	1
1 .		44	44	generic	par64 shortnose	MFL	38 x 20 °	1
1 .		45	45	generic	par64 shortnose	MFL	38 x 20 °	1
1 .		46	46	generic	par64 shortnose	MFL	38 x 20 °	1
1 .		47	47	generic	par64 shortnose	MFL	38 x 20 °	1
1 .		48	48	generic	par64 shortnose	MFL	38 x 20 °	1
1 .		49	49	generic	par64 shortnose	MFL	38 x 20 °	1
1 .		50	50	generic	par64 shortnose	MFL	38 x 20 °	1
1 .		51	51	generic	par64 Zij Links	-	-	1
1 .		52	52	generic	par64 Zij Links	-	-	1
1 .		53	53	generic	par64 Zij Links	MFL	38 x 20 °	1
1 .		54	54	generic	par64 Zij Links	MFL	38 x 20 °	1
1 .		55	55	generic	par64 Zij Links	MFL	38 x 20 °	1
1 .		56	56	generic	par64 Zij Links	MFL	38 x 20 °	1
1 .		57	57	generic	par64	MFL	38 x 20 °	1
1 .		58	58	generic	par64	MFL	38 x 20 °	1
1 .		59	59	generic	par64	MFL	38 x 20 °	1
1 .		60	60	generic	par64	MFL	38 x 20 °	1
1 .		61	61	ShowTec	four-light Blinder	MFL	35 °	1
1 .		62	62	ShowTec	four-light Blinder	MFL	35 °	1
1 .		63	63	ShowTec	four-light Blinder	MFL	35 °	1
1 .		64	64	ShowTec	four-light Blinder	MFL	35 °	1
1 .		65	65	generic	ACL	n/a	n/a	1
1 .		66	66	Showtec	Portable Blower Fan RC-	n/a	n/a	1
1 .		67	67	ShowTec	four-light Blinder	MFL	35 °	1
1 .		68	68	ShowTec	four-light Blinder	MFL	35 °	1
1 .		69	69	ShowTec	four-light Blinder	MFL	35 °	1
1 .		70	70	ShowTec	four-light Blinder	MFL	35 °	1
1 .		71	71	generic	ACL	clear	7 °	1
1 .		72	72	Showtec	Portable Blower Fan RC-	n/a	n/a	1

DMX ID			FIXTURE		OPTICS		footprint
	adres	Channel	Fixture	manufacturer type	Lens	Angle	
1 .	101	101	ETC	S4 LEDSeries2 Tungsten	Quick Setup	Front	10
1 .	111	102	ETC	S4 LEDSeries2 Tungsten	Quick Setup	Front	10
1 .	121	103	ETC	S4 LEDSeries2 Tungsten	Quick Setup	Front	10
1 .	131	104	ETC	S4 LEDSeries2 Tungsten	Quick Setup	Front	10
1 .	141	105	ETC	S4 LEDSeries2 Tungsten	Quick Setup	Front	10
1 .	151	106	ETC	S4 LEDSeries2 Tungsten	Quick Setup	Front	10
1 .	161	107	ETC	S4 LEDSeries2 Tungsten	Quick Setup	Front	10
1 .	171	108	ETC	S4 LEDSeries2 Tungsten	Quick Setup	Front	10
1 .	181	201	ETC	S4 LEDSeries2 Tungsten	Quick Setup	Front	10
1 .	191	202	ETC	S4 LEDSeries2 Tungsten	Quick Setup	Front	10
1 .	201	203	ETC	S4 LEDSeries2 Tungsten	Quick Setup	Front	10
1 .	211	204	ETC	S4 LEDSeries2 Tungsten	Quick Setup	Front	10
1 .	221	205	ETC	S4 LEDSeries2 Tungsten	Quick Setup	Front	10
1 .	231	206	ETC	S4 LEDSeries2 Tungsten	Quick Setup	Front	10
1 .	241	207	ETC	S4 LEDSeries2 Tungsten	Quick Setup	Front	10
1 .	251	208	ETC	S4 LEDSeries2 Tungsten	Quick Setup	Front	10
1 .	261	211	ETC	S4 LEDSeries2 Tungsten	Quick Setup	Front	10
1 .	271	212	ETC	S4 LEDSeries2 Tungsten	Quick Setup	Front	10
1 .	281	213	ETC	S4 LEDSeries2 Tungsten	Quick Setup	Front	10
1 .	291	214	ETC	S4 LEDSeries2 Tungsten	Quick Setup	Front	10
2 .	1	1101	Robe	DLF Wash	Lx 4	Mode 1	29
2 .	30	1102	Robe	DLF Wash	Lx 4	Mode 1	29
2 .	59	1103	Robe	DLF Wash	Lx 4	Mode 1	29
2 .	88	1104	Robe	DLF Wash	Lx 4	Mode 1	29
2 .	117	1105	Robe	DLF Wash	Lx 4	Mode 1	29
2 .	146	1106	Robe	DLF Wash	Lx 4	Mode 1	29
2 .	175	1201	Robe	DLF Wash	Lx 2	Mode 1	29
2 .	204	1202	Robe	DLF Wash	Lx 2	Mode 1	29
2 .	233	1203	Robe	DLF Wash	Lx 2	Mode 1	29
2 .	262	1204	Robe	DLF Wash	Lx 2	Mode 1	29
2 .	291	1205	Robe	DLF Wash	Lx 2	Mode 1	29
2 .	320	1206	Robe	DLF Wash	Lx 2	Mode 1	29
2 .	349	1501	Robe	DL4 F Wash	*	Mode 1	29
2 .	378	1502	Robe	DL4 F Wash	*	Mode 1	29
2 .	407	1503	Robe	DL4 F Wash	*	Mode 1	29
2 .	436	1504	Robe	DL4 F Wash	*	Mode 1	29
3 .	1	2101	Martin	Quantum Profile	Lx 4	Extended 16-bit	27
3 .	28	2102	Martin	Quantum Profile	Lx 4	Extended 16-bit	27
3 .	55	2103	Martin	Quantum Profile	Lx 4	Extended 16-bit	27
3 .	82	2104	Martin	Quantum Profile	Lx 4	Extended 16-bit	27
3 .	109	2201	Martin	Quantum Profile	Lx 2	Extended 16-bit	27
3 .	136	2202	Martin	Quantum Profile	Lx 2	Extended 16-bit	27
3 .	163	2203	Martin	Quantum Profile	Lx 2	Extended 16-bit	27
3 .	190	2204	Martin	Quantum Profile	Lx 2	Extended 16-bit	27
3 .	217	2205	Martin	Quantum Profile	Lx 2	Extended 16-bit	27
3 .	244	2206	Martin	Quantum Profile	Lx 2	Extended 16-bit	27

DMX ID		FIXTURE				OPTICS	
adres	Channel	Fixture	manufacturer	type			footprint
3 .	271	2501	Martin	Quantum Profile	*	Extended 16-bit	27
3 .	298	2502	Martin	Quantum Profile	*	Extended 16-bit	27
3 .	325	2503	Martin	Quantum Profile	*	Extended 16-bit	27
3 .	352	2504	Martin	Quantum Profile	*	Extended 16-bit	27
4 .	1	3501	Robe	Robin LEDBeam 100	*	Mode 2	19
4 .	20	3502	Robe	Robin LEDBeam 100	*	Mode 2	19
4 .	39	3503	Robe	Robin LEDBeam 100	*	Mode 2	19
4 .	58	3504	Robe	Robin LEDBeam 100	*	Mode 2	19
4 .	77	3505	Robe	Robin LEDBeam 100	*	Mode 2	19
4 .	96	3506	Robe	Robin LEDBeam 100	*	Mode 2	19
4 .	115	3507	Robe	Robin LEDBeam 100	*	Mode 2	19
4 .	134	3508	Robe	Robin LEDBeam 100	*	Mode 2	19
4 .	481	7201	Martin	Atomic 3000 DMX	Lx 3	SFX 4-channel	4
4 .	485	7202	Martin	Atomic 3000 DMX	Lx 3	SFX 4-channel	4
4 .	489	7203	Martin	Atomic 3000 DMX	Lx 3	SFX 4-channel	4
4 .	493	7204	Martin	Atomic 3000 DMX	Lx 3	SFX 4-channel	4
5 .	1	5901	Robe	DL7 S Profile	Circle House	mode 1	51
5 .	52	5902	Robe	DL7 S Profile	Circle House	mode 1	51
5 .	103	5903	Robe	DL7 S Profile	Circle House	mode 1	51
5 .	154	5904	Robe	DL7 S Profile	Circle House	mode 1	51
5 .	205	5905	Robe	DL7 S Profile	Circle House	mode 1	51
5 .	256	5906	Robe	DL7 S Profile	Circle House	mode 1	51
5 .	307	5907	Robe	DL7 S Profile	Circle House	mode 1	51
5 .	358	5908	Robe	DL7 S Profile	Circle House	mode 1	51
6 .	1	5501	Robe	DL7 S Profile	House	mode 1	51
6 .	52	5502	Robe	DL7 S Profile	House	mode 1	51
6 .	103	5503	Robe	DL7 S Profile	House	mode 1	51
6 .	154	5504	Robe	DL7 S Profile	House	mode 1	51

DMX ID		FIXTURE				OPTICS	
adres	Channel	Fixture	manufacturer	type			footprint
7 .	1	8901	Robe	ParFect 100	House	Mode 1	14
7 .	15	8902	Robe	ParFect 100	House	Mode 1	14
7 .	29	8903	Robe	ParFect 100	House	Mode 1	14
7 .	43	8904	Robe	ParFect 100	House	Mode 1	14
7 .	57	8905	Robe	ParFect 100	House	Mode 1	14
7 .	71	8906	Robe	ParFect 100	House	Mode 1	14
7 .	85	8911	Robe	ParFect 100	House	Mode 1	14
7 .	99	8912	Robe	ParFect 100	House	Mode 1	14
7 .	113	8913	Robe	ParFect 100	House	Mode 1	14
7 .	127	8914	Robe	ParFect 100	House	Mode 1	14
7 .	141	8915	Robe	ParFect 100	House	Mode 1	14
7 .	155	8921	Robe	ParFect 100	House	Mode 1	14
7 .	169	8922	Robe	ParFect 100	House	Mode 1	14
7 .	183	8923	Robe	ParFect 100	House	Mode 1	14
7 .	197	8924	Robe	ParFect 100	House	Mode 1	14
7 .	211	8925	Robe	ParFect 100	House	Mode 1	14
7 .	225	8926	Robe	ParFect 100	House	Mode 1	14
7 .	239	8931	Robe	ParFect 100	House	Mode 1	14
7 .	253	8932	Robe	ParFect 100	House	Mode 1	14
7 .	267	8933	Robe	ParFect 100	House	Mode 1	14
7 .	281	8934	Robe	ParFect 100	House	Mode 1	14
7 .	295	8935	Robe	ParFect 100	House	Mode 1	14
7 .	309	8936	Robe	ParFect 100	House	Mode 1	14
7 .	323	8937	Robe	ParFect 100	House	Mode 1	14
7 .	337	8938	Robe	ParFect 100	House	Mode 1	14
7 .	351	8939	Robe	ParFect 100	House	Mode 1	14
8 .	1	8941	Robe	ParFect 100	House	Mode 1	14
8 .	15	8942	Robe	ParFect 100	House	Mode 1	14
8 .	29	8943	Robe	ParFect 100	House	Mode 1	14
8 .	43	8944	Robe	ParFect 100	House	Mode 1	14
8 .	57	8945	Robe	ParFect 100	House	Mode 1	14
8 .	71	8946	Robe	ParFect 100	House	Mode 1	14
8 .	85	8947	Robe	ParFect 100	House	Mode 1	14
8 .	99	8951	Robe	ParFect 100	House	Mode 1	14
8 .	113	8952	Robe	ParFect 100	House	Mode 1	14
8 .	127	8953	Robe	ParFect 100	House	Mode 1	14
8 .	141	8954	Robe	ParFect 100	House	Mode 1	14
8 .	155	8961	Robe	ParFect 100	House	Mode 1	14
8 .	169	8962	Robe	ParFect 100	House	Mode 1	14
8 .	183	8963	Robe	ParFect 100	House	Mode 1	14
8 .	197	8964	Robe	ParFect 100	House	Mode 1	14
8 .	211	8965	Robe	ParFect 100	House	Mode 1	14

DMX ID	Channel	Fixtue	FIXTURE manufacturer	type		OPTICS	footprint
9 .	1	8971	Chauvet	COLORdash Par-Quad	House	6-channel	6
9 .	7	8972	Chauvet	COLORdash Par-Quad	House	6-channel	6
9 .	13	8973	Chauvet	COLORdash Par-Quad	House	6-channel	6
9 .	19	8974	Chauvet	COLORdash Par-Quad	House	6-channel	6
9 .	25	8975	Chauvet	COLORdash Par-Quad	House	6-channel	6
9 .	31	8976	Chauvet	COLORdash Par-Quad	House	6-channel	6
9 .	37	8977	Chauvet	COLORdash Par-Quad	House	6-channel	6
9 .	43	8978	Chauvet	COLORdash Par-Quad	House	6-channel	6
9 .	49	8981	Chauvet	COLORdash Par-Quad	House	6-channel	6
9 .	55	8982	Chauvet	COLORdash Par-Quad	House	6-channel	6
9 .	61	8983	Chauvet	COLORdash Par-Quad	House	6-channel	6
9 .	67	8984	Chauvet	COLORdash Par-Quad	House	6-channel	6
9 .	73	8985	Chauvet	COLORdash Par-Quad	House	6-channel	6
9 .	79	8986	Chauvet	COLORdash Par-Quad	House	6-channel	6
9 .	85	8987	Chauvet	COLORdash Par-Quad	House	6-channel	6
9 .	91	8988	Chauvet	COLORdash Par-Quad	House	6-channel	6
9 .	101	8991	Chauvet	Ovation CYC-1	House	13-channel	13
9 .	114	8992	Chauvet	Ovation CYC-1	House	13-channel	13
9 .	127	8993	Chauvet	Ovation CYC-1	House	13-channel	13
9 .	140	8994	Chauvet	Ovation CYC-1	House	13-channel	13
9 .	153	8995	Chauvet	Ovation CYC-1	House	13-channel	13
9 .	166	8996	Chauvet	Ovation CYC-1	House	13-channel	13
9 .	179	8997	Chauvet	Ovation CYC-1	House	13-channel	13
9 .	192	8998	Chauvet	Ovation CYC-1	House	13-channel	13
x .	508	990 990	MDG	ATMe		3-channel	3
99 .	501	9991	ELC Lighting	control channel		STAGE	
99 .	502	9992	ELC Lighting	control channel		HOUSE	
99 .	503	9993	ELC Lighting	control channel		HOUSE	

* !!Check for availability with the pre Production !!

Stage specifications

		Width		depth		Height		Clearance(max)		Amount
		Metr	imp	Metr	imp	Metr	imp	Metr	Imp	
Total	incl sidewings	26	85'4"	8	26'3"	1,2	3'11"	7	22'12"	
	stage opening	10	32'10"	7	22'12"	1,2	3'11"	7	22'12"	
	Rolling risers	2	6'7"	1,2	3'11"	10cm / 50cm				12
	Stage decks	2	6'7"	1	3'4"	Variable by 20cm / 8 inches				12

Lighting specifications

Default

Count	Manufacturer	Type	DMX	Location	Count
12	Robe	Mode 1 DLF wash <i>480w RGBW led, 5,5-60</i>		29 Lx 4 Lx 2	6 2
10	Martin	Ext 16 Quantum Profile spot <i>480w 6000k led, CMY, 12-36</i>		27 Lx 4 Lx 2	4 6
4	Martin	4 chan Atomic 3000 <i>3000w 8000k Xenon, 120</i>		4 Lx 3	4
12	Robe	Mode 1 DL7S Profile <i>800w RGBALCI led, 7 -43</i>		51 House	12
42	Robe	Mode 1 Parfect 100 <i>12 x 15w RGBW led, 7</i>		14 House	42
16	Chauvet	6 chan Colordash par quad 18 <i>18 x 7w RGBA led, 20</i>		6 House	16
8	Chauvet	Mode 1 Ovation cyc-1 <i>60 x 2,3w RGBAL led, 81 - 125</i>		13 House	8
4	generic	Four light blinder <i>4x 650w tungsten, 35</i>		1 Lx 1	4
4	Generic	ACL-set (2x 4 par64) <i>8x 250 tungsten, 7</i>		1 Lx 4 Lx 3 Lx 2	1 2 1
8	etc	Fresnel source four led series 2 tungsten <i>225w RALBI, 15-50</i>		10 Front	8
12	etc	zoom Source four led series 2 tungsten <i>225w RALBI, 15-35</i>		10 Front Proscenium	8 4
24	Generic	CP61 Par 64 long nose <i>1000w tungsten 20 x 22</i>		1 Lx 4 Lx 3 Lx 2 Lx 1	5 6 5 6
1	MDG	AtMe Mineral cracked oil hazer w/co2 pressure		3 T.b.d	1

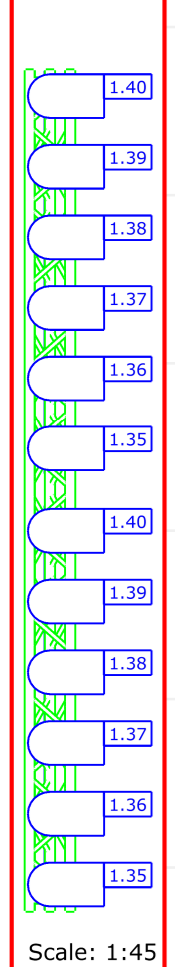
Lightning specifications			Additition Floorpackage (* !! Check for Availability!!)			
Count	Manufacturer		type	DMX	Location	count
8	Robe	Mode 2	ledbeam 100 <i>12x15w RGB led 6*</i>		19 Second stage	8
4	Robe	Mode 1	DLF wash <i>480w RGBW led, 5,5-60</i>		29 Main stage	4
4	Martin	Extended 16	Quantum Profile spot <i>480w 6000k led, CMY 12-36</i>		27 Main stage	4
14	Prolight	49 channel	Lumipix 12Q tour <i>12x10w RGBW led, 22,6</i>		49 Mainstage secondstage	8 6
4	Generic	DWE	Four-light blinder <i>4x 650w tungesten, 35</i>		1 Main stage	4
2	Generic	ACL	ACL-set (2x 4par 64) <i>8x tungesten, 7</i>		1 Mainstage Second stage	1 1
12	Generic	CP62	Par 64 shortnose <i>1000w tungsten, 38x20</i>		1 Mainstage Second stage	8 4
2	Look Solutions		Viper NT <i>1300w heavy fogger</i>		1 Mainstage second stage	1 1

Lighting specifications			Control
Count	Manufacturer	type	Specifications
1	Ma lighting	Grand ma2 Full size	8192 parameters
7	ELC lighting	xLand node-8	Art-Net/ sACN
4	Ma lighting	Touring dimmer	12 x 2,3 kW
2	Strand lighting	LD90 Dimmer	12 x 2,3 kW

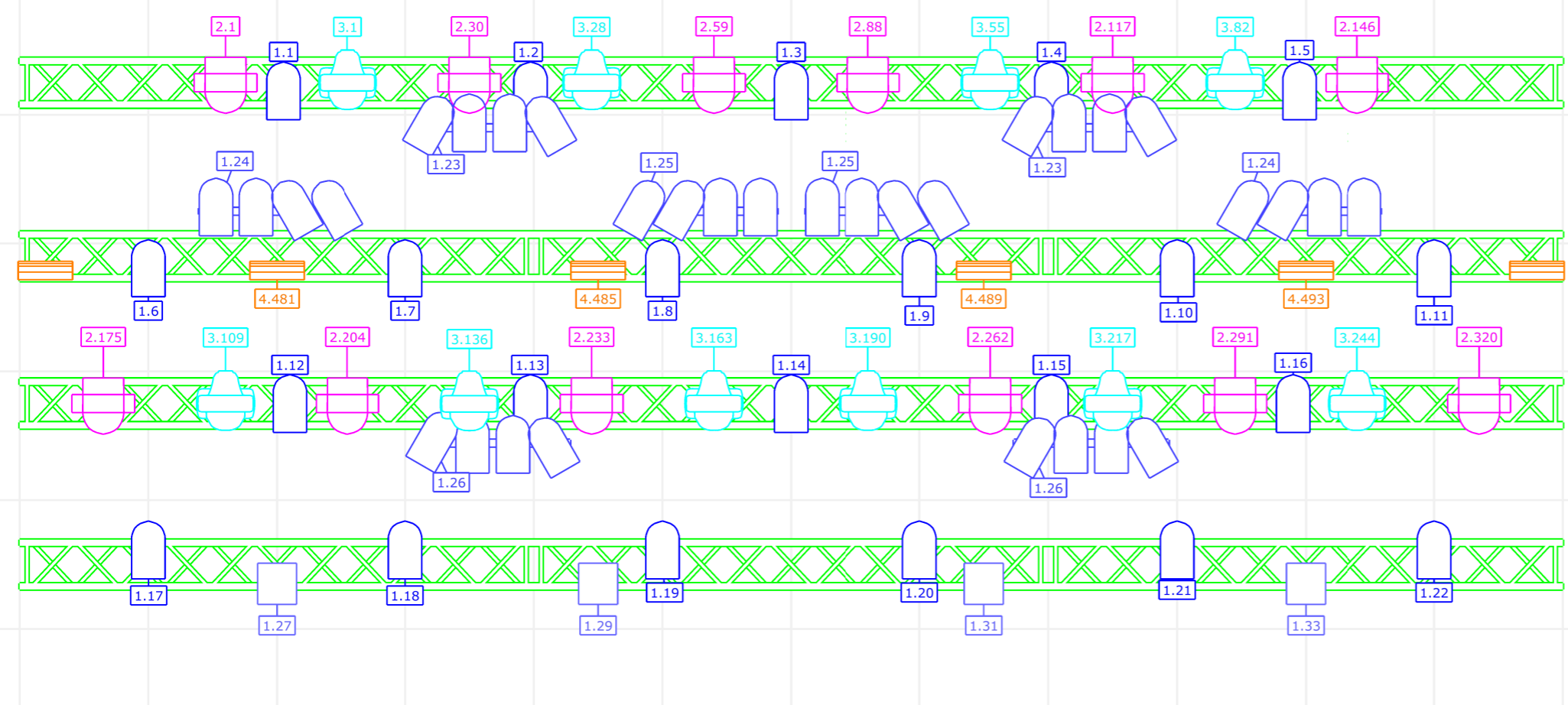
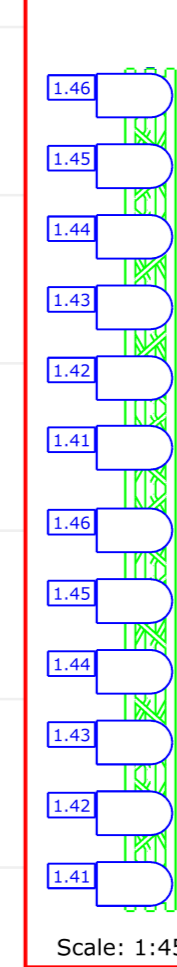
Network settings				Control
House	GrandMA2 Full :	192.168.021	.200	255.255.000.000
Visitor		192.168.021	.xxx	255.255.000.000
SL Stagerack	ELC node 8	192.168.021	.201	255.255.000.000
SL Stagerack	ELC node 8	192.168.021	.202	255.255.000.000
SR catwalk	ELC node 8	192.168.021	.211	255.255.000.000
SL Catwalk	ELC node 8	192.168.021	.212	255.255.000.000
SL proscenium	ELC node 8	192.168.021	.221	255.255.000.000
SL Front	ELC node 8	192.168.021	.231	255.255.000.000
Dimmerciry	ELC node 8	192.168.021	.241	255.255.000.000
F.o.H.	ELC node 8	192.168.021	.251	255.255.000.000

plot: stage, DMX

side SR



side SL

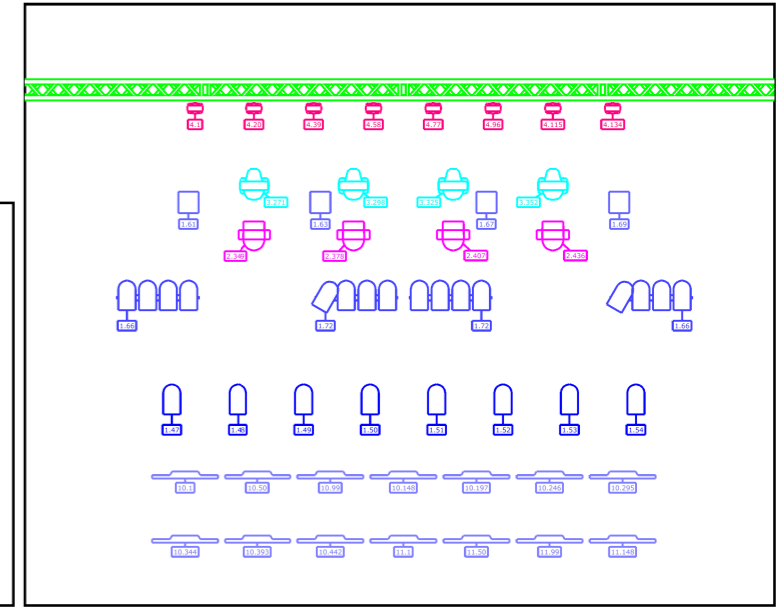
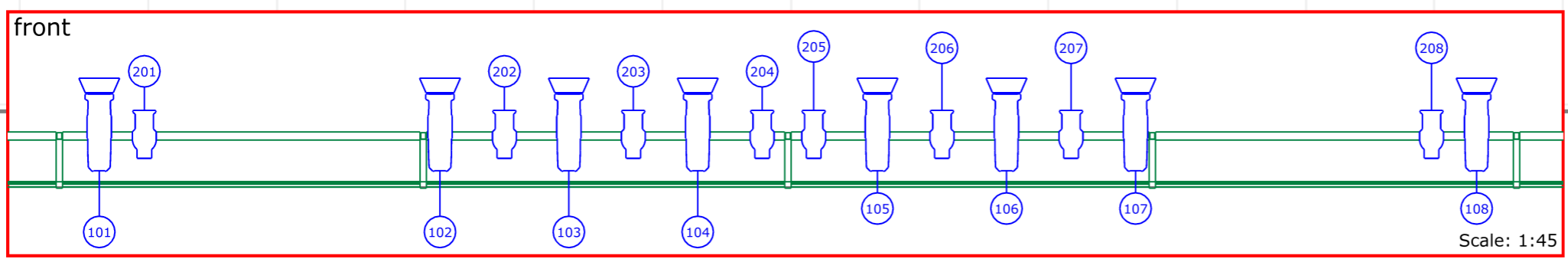
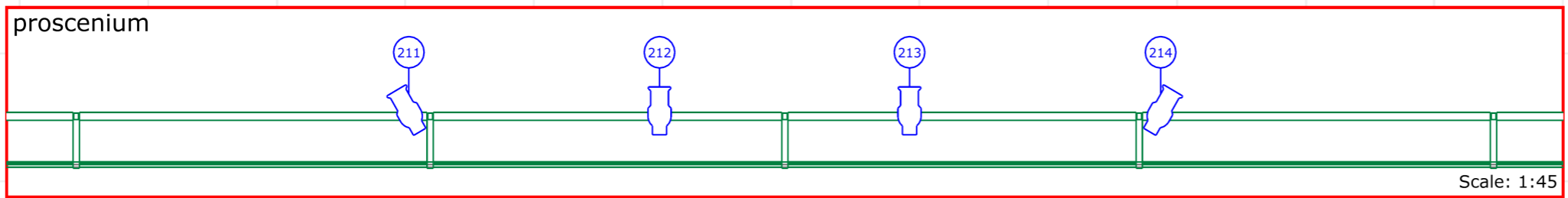


Symbol key DEFAULT

- Conventional: 22 x Par 64 CP61 /
- Conventional: 4 x 8 Par 64 ACL
- Conventional: 4 x Molefay 4 Cell Blinder
- Xenon Strobe: 4 x Martin Atomic 3000 DMX
- LED Moving Head Wash: 12 x Robe Robin DL4F Wash
- LED Moving Head Spot: 10 x Martin MAC Quantum Profile LED Profile / fresnel: 20 x ETC Source Four LED Series 2 Tungsten HD

Symbol key MOBILE (check for availability)

- Conventional: 2 x 8 Par64 ACL
- Conventional: 8 x Par 64 Short CP62
- Conventional: 4 x four-light molefay blinder
- LED Moving Head washbeam: 8 x Robe Robin 100 LEDBeam
- LED Moving Head Wash: 4 x Robe Robin DLF Wash
- LED Moving Head Spot: 4 x Martin MAC Quantum Profile
- LED Linear Batten: 14 x Prolights LumiPix 12Q Tour



Project: **Effenaar Main Stage** Project location: **Effenaar Grote Zaal**

EFFENAAR

Drawing version: 20231221 Drawing author: DutchGuy Design / Erik Steijvers Project date: december 2023

Control:
 1 x MA Lighting GrandMA 2 Full Size
 - 8192 parameters
 8 x ELC Lighting xLAN Node8
 - all lighting controlled by sACN

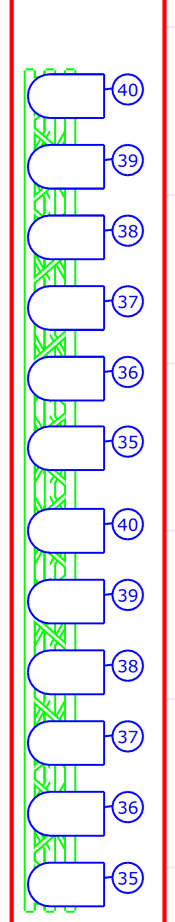
Atmosphere:
 1 x MDG ATMe
 1 x LOOK Solutions Viper NT

IP-adresses:

house console:	192.168.021.200
touring console:	192.168.021.xxx
submask:	255.255.255.000
xLAN Node8	201: 192.168.021.201 GZ Stagerack SL 1
	202: 192.168.021.202 GZ Stagerack SL 2
	211: 192.168.021.211 GZ Catwalk SR
	212: 192.168.021.212 GZ Catwalk SL
	221: 192.168.021.221 GZ Proscenium
	231: 192.168.021.231 GZ Front
	241: 192.168.021.241 GZ Dimm.City
	251: 192.168.021.251 GZ FoH

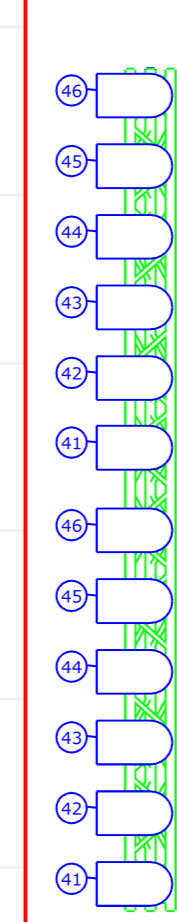
plot: stage, circuit

side SR



Scale: 1:45

side SL



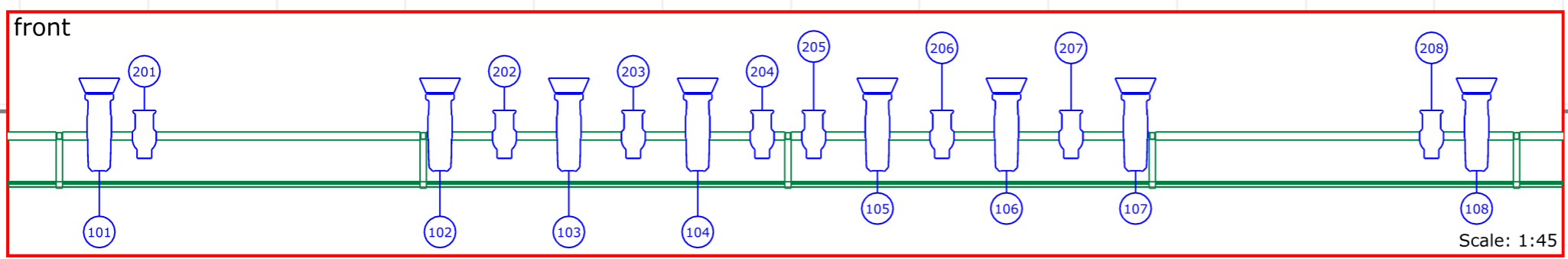
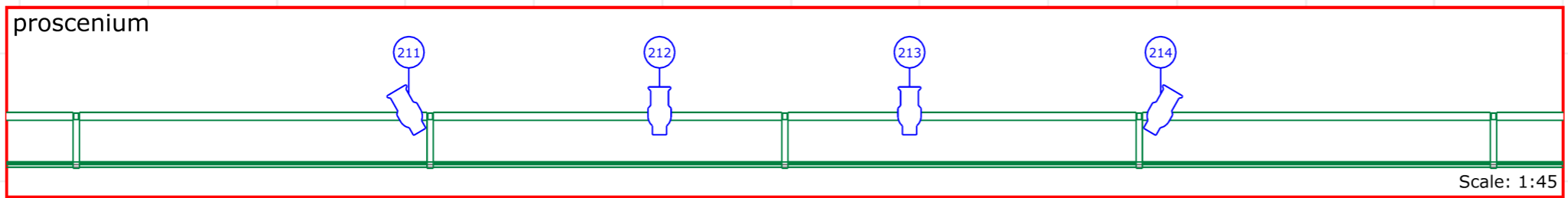
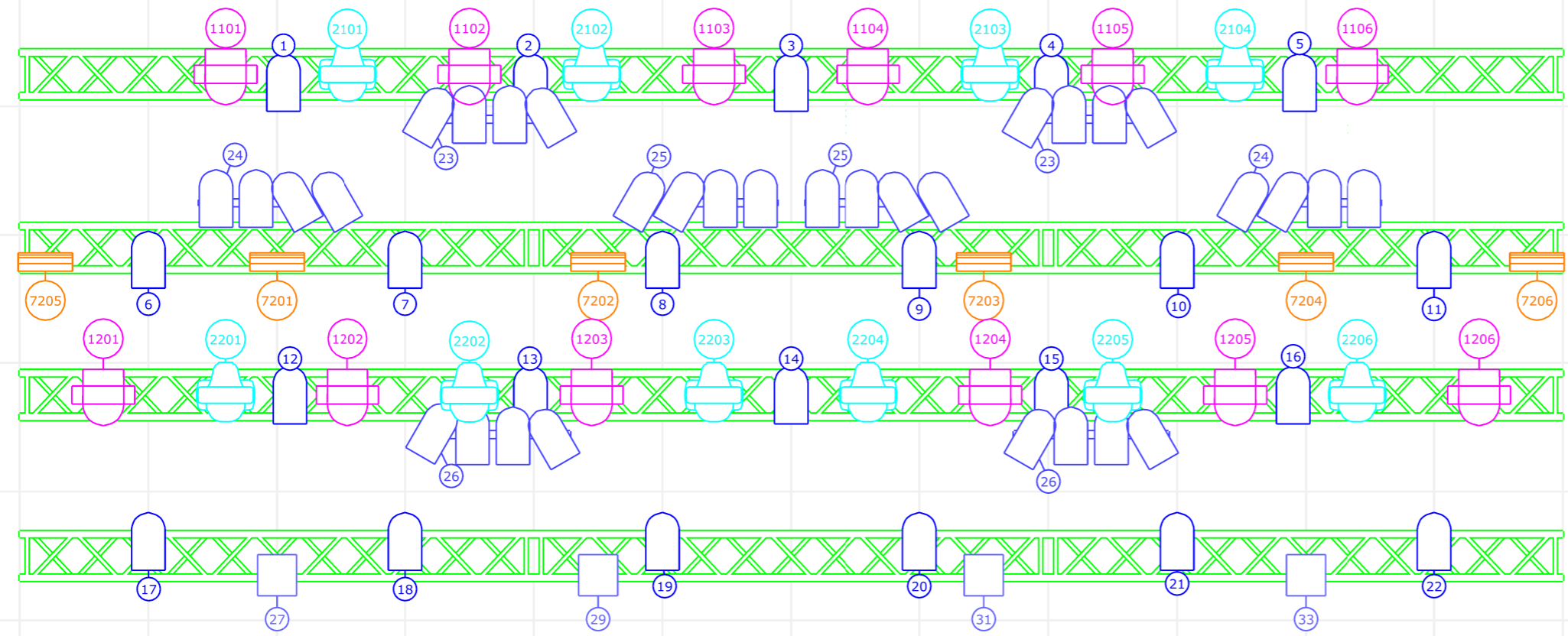
Scale: 1:45

Symbol key DEFAULT

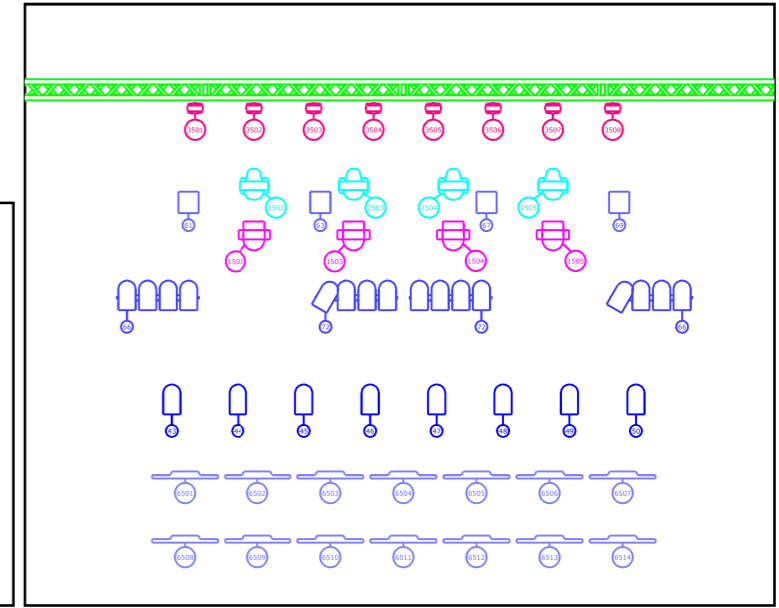
- Conventional: 22 x Par 64 CP61 /
- Conventional: 4 x 8 Par 64 ACL
- Conventional: 4 x Molefay 4 Cell Blinder
- Xenon Strobe: 4 x Martin Atomic 3000 DMX
- LED Moving Head Wash: 12 x Robe Robin DL4F Wash
- LED Moving Head Spot: 10 x Martin MAC Quantum Profile LED Profile / fresnel: 20 x ETC Source Four LED Series 2 Tungsten HD

Symbol key MOBILE (check for availability)

- Conventional: 2 x 8 Par64 ACL
- Conventional: 8 x Par 64 Short CP62
- Conventional: 4 x four-light molefay blinder
- LED Moving Head washbeam: 8 x Robe Robin 100 LEDBeam
- LED Moving Head Wash: 4 x Robe Robin DLF Wash
- LED Moving Head Spot: 4 x Martin MAC Quantum Profile
- LED Linear Batten: 14 x Prolights LumiPix 12Q Tour



Scale: 1:45



Project	Effenaar Main Stage	Project location	Effenaar Grote Zaal
<h1>EFFENAAR</h1>			
Drawing version	20231221	Drawing author	DutchGuy Design / Erik Steijvers
Project date	december 2023		

Control:
 1 x MA Lighting GrandMA 2 Full Size
 - 8192 parameters
 8 x ELC Lighting xLAN Node8
 - all lighting controlled by sACN





Atmosphere:
 1 x MDG AtMe
 1 x LOOK Solutions Viper NT

IP-adresses:

house console:	192.168.021.200
touring console:	192.168.021.xxx
submask:	255.255.255.000
xLAN Node8	201: 192.168.021.201 GZ Stagerack SL 1
	202: 192.168.021.202 GZ Stagerack SL 2
	211: 192.168.021.211 GZ Catwalk SR
	212: 192.168.021.212 GZ Catwalk SL
	221: 192.168.021.221 GZ Proscenium
	231: 192.168.021.231 GZ Front
	241: 192.168.021.241 GZ Dimm.City
	251: 192.168.021.251 GZ FoH

plot: house, DMX

Symbol key DEFAULT

-  LED wash:
42 x Robe Robin ParFect 100
-  LED wash:
10 x Chauvet COLORdash Par-Quad 18
-  Moving head Profile:
12 x Robe Robin DL7S Profile
-  LED wash:
8 x Chauvet Ovation CYC 1 FC

IP-adresses:

house console: 192.168.021.200
 touring console: 192.168.021.xxx
 submask: 255.255.255.000

xLAN Node8

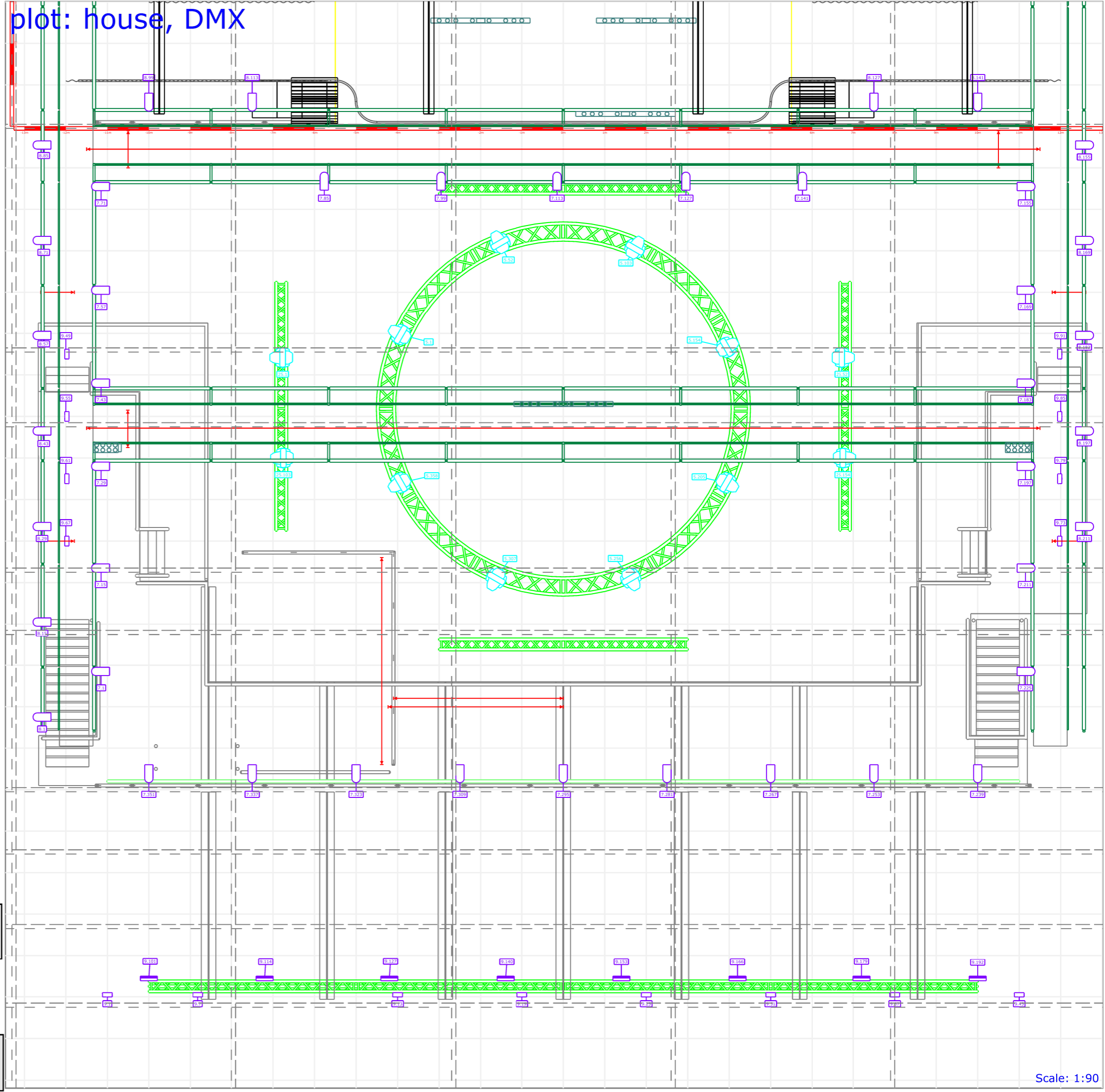
201:	192.168.021.201	GZ Stagerack SL 1
202:	192.168.021.202	GZ Stagerack SL 2
211:	192.168.021.211	GZ Catwalk SR
212:	192.168.021.212	GZ Catwalk SL
221:	192.168.021.221	GZ Proscenium
231:	192.168.021.231	GZ Front
241:	192.168.021.241	GZ Dimm.City
251:	192.168.021.251	GZ FoH

Control:

- 1 x MA Lighting GrandMA 2 Full Size
- 8192 parameters
- 7 x ELC Lighting xLAN Node8
- all lighting controlled by SACN

Atmosphere:

- 1 x MDG AtMe
- 1 x LOOK Solutions Viper NT







Project	Effenaar Main Stage	Project location	Effenaar Grote Zaal
---------	---------------------	------------------	---------------------



Drawing version	Drawing author	Project date
20231221	DutchGuy Design / Erik Steijvers	december 2023

plot: house, circuit

Symbol key DEFAULT

-  LED wash:
42 x Robe Robin ParFect 100
-  LED wash:
10 x Chauvet COLORdash Par-Quad 18
-  Moving head Profile:
12 x Robe Robin DL7S Profile
-  LED wash:
8 x Chauvet Ovation CYC 1 FC

IP-adresses:

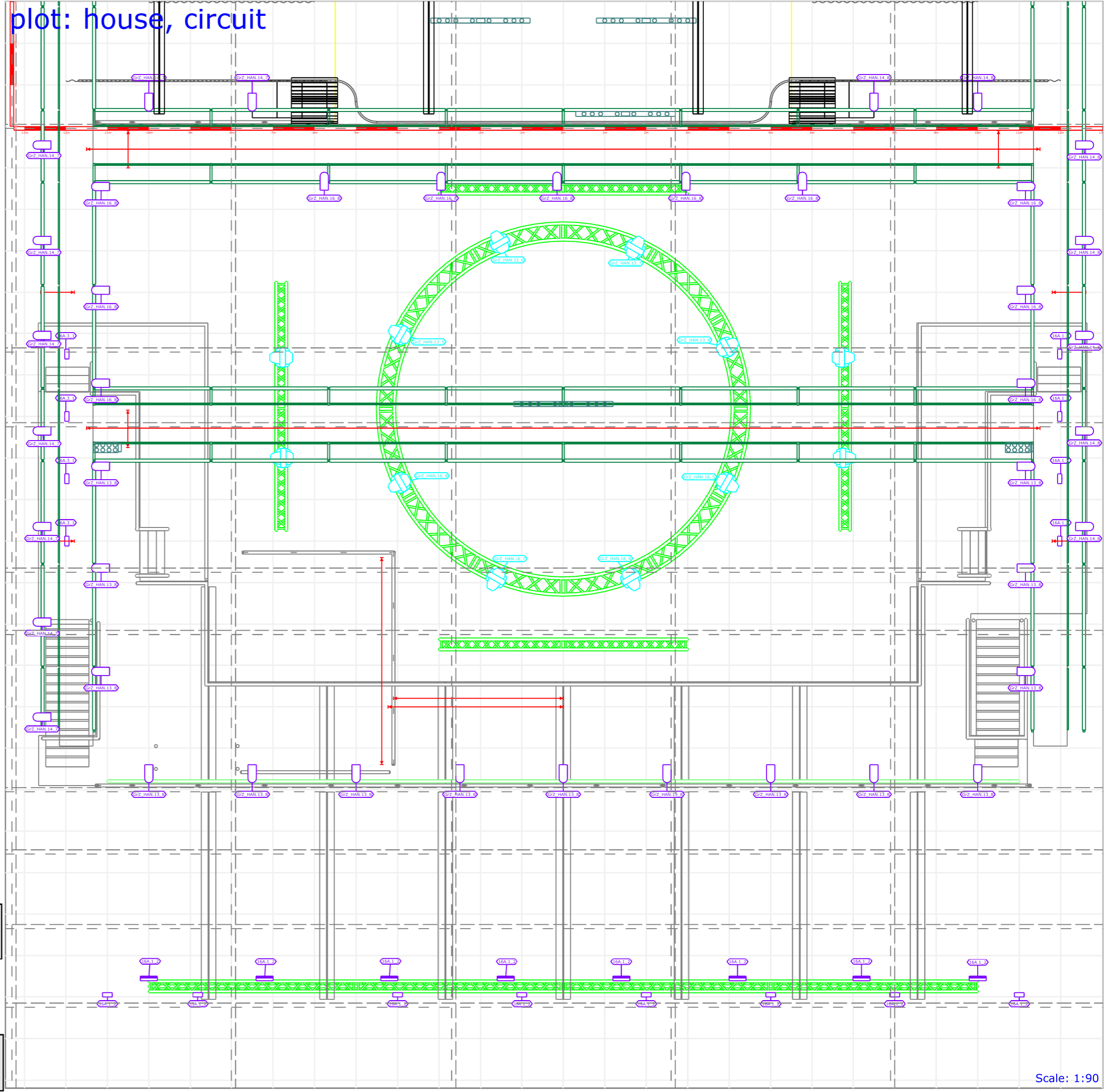
house console:	192.168.021.200	
touring console:	192.168.021.xxx	
submask:	255.255.255.000	
xLAN Node8	201:	192.168.021.201 GZ Stagerack SL 1
	202:	192.168.021.202 GZ Stagerack SL 2
	211:	192.168.021.211 GZ Catwalk SR
	212:	192.168.021.212 GZ Catwalk SL
	221:	192.168.021.221 GZ Proscenium
	231:	192.168.021.231 GZ Front
	241:	192.168.021.241 GZ Dimm.City
	251:	192.168.021.251 GZ FoH

Control:

- 1 x MA Lighting GrandMA 2 Full Size
- 8192 parameters
- 7 x ELC Lighting xLAN Node8
- all lighting controlled by SACN

Atmosphere:

- 1 x MDG AtMe
- 1 x LOOK Solutions Viper NT



Project: Effenaar Main Stage Project location: Effenaar Grote Zaal



Drawing version 20231221	Drawing author DutchGuy Design / Erik Steijvers	Project date december 2023
-----------------------------	--	-------------------------------